



Community  
Colleges  
of Spokane  
Global Education

# SCC Mandatory International Student Orientation

**DATE: Thursday, December 28 at 8:30am  
(do NOT be late)**

**LOCATION: SCC, LAIR (Bldg. 6 ), Center of Inclusion & Diversity**

TIME	WHAT TO EXPECT & BRING:
8:30 AM	 <p><b><u>*IMMIGRATION CHECK-IN</u></b>  <b><u>Must bring your I-20, passport/visa, I-94</u></b>            Light Breakfast &amp; Coffee Provided</p>
9:30 AM	<p><b>ORIENTATION OVERVIEW:</b>  <i>Everything You Need to Know as a New International Student!</i>            Immigration Rules &amp; Regulations and Medical Insurance</p>
10:45 AM	<b>BREAK TIME</b>
11 AM	<p><b>Cultural Difference</b>            How to navigate student life in the U.S.</p>
Noon	<p><b>Lunch and Social Time</b></p> 
1 pm	<b>Campus Tour</b>
2:30 PM	<p><b>ID Card &amp; Enroll in Classes</b>            And other support you need before the start of the quarter.</p>

# Meet The Global Education Team!



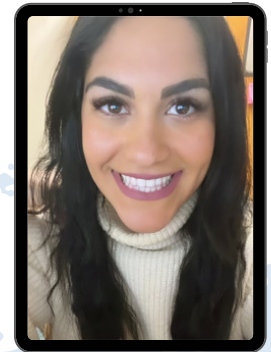
**Carolin Gipple, DSO**

Retention Specialist

SFCC/SCC Spokane Campuses

[Carolin.Gipple@ccs.spokane.edu](mailto:Carolin.Gipple@ccs.spokane.edu)

**509-533-8277**



**Majda Ritchie, DSO**

Global Education Manager

SFCC/SCC Spokane Campuses

[Majda.Ritchie@ccs.spokane.edu](mailto:Majda.Ritchie@ccs.spokane.edu)

**509-533-8885**



**Amber McKenzie, PDSO**

Asst. Dean of Global Education

SFCC/SCC Spokane Campuses

[Amber.McKenzie@ccs.spokane.edu](mailto:Amber.McKenzie@ccs.spokane.edu)

509-533-3122 | **509-514-5075**



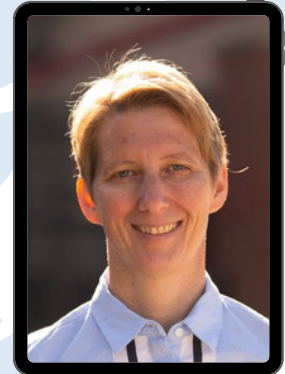
**Amy Cosgrove**

Intl Homestay Coordinator

SFCC/SCC Spokane Campuses

[Amy.Cosgrove@ccs.spokane.edu](mailto:Amy.Cosgrove@ccs.spokane.edu)

**509-533-4113**



**Mateja Lončar, DSO**

Curriculum Advisor

CCS-Pullman Campus

[Mateja.Loncar@sfcc.spokane.edu](mailto:Mateja.Loncar@sfcc.spokane.edu)

**509-279-6453**



**Alyona Ryan, DSO**

Admissions Specialist

SFCC/SCC Spokane Campuses

[Alyona.Ryan@scc.spokane.edu](mailto:Alyona.Ryan@scc.spokane.edu)

**509-344-9743**